

A Record of *Scepticus griseus* (ROELOFS) (Coleoptera, Curculionidae, Entiminae) from Taiwan

Hiraku YOSHITAKE¹⁾ and Chi-Feng LEE²⁾

¹⁾Natural Resources Inventory Center, National Institute for Agro-Environmental Sciences, 3–1–3 Kannondai, Tsukuba, Ibaraki, 305–8604 Japan

²⁾Division of Applied Zoology, Taiwan Agricultural Research Institute, No.189, Zhongzheng Rd., Wufeng Dist., Taichung City 41362, Taiwan

Scepticus griseus (ROELOFS, 1873) belonging to the tribe Tanymecini, subfamily Entiminae (Coleoptera, Curculionidae) has been known to occur in Japan (Honshu, Shikoku, Kyushu and the Nansei Islands) and Korea (NAKAMURA & MORIMOTO, 2015). In Japan, this species inhabits sandy coastal zones mainly on the Pacific Ocean side from Honshu to the Nansei Islands, feeding on various grasses and shrubs (MORIMOTO, 1962; SAWADA, 2008). Although the known distribution range of *S. griseus* strongly suggests its occurrence in Taiwan, this species has never been recorded from the country until now.

In the course of our research of weevil specimens preserved in the Taiwan Agricultural Research Institute, Taichung, Taiwan (TARI), we found two specimens of *S. griseus* collected from northern Taiwan. Here we report it as the first record of *S. griseus* from the country.

Scepticus griseus (ROELOFS, 1873)

(Figs. 1–2)

Piazomias griseus ROELOFS, 1873: 162 (type locality: Japon).

Scepticus griseus: NAKAMURA & MORIMOTO, 2015: 359 (= *Scepticus uniformis* KÔNO, 1930).

Scepticus uniformis: YAMASHITA *et al.*, 2015: 199 (DNA barcoding).

See NAKAMURA and MORIMOTO (2015) for other synonymy.

Specimens examined. 2 exs. (TARI), Sanchih, Taipei, Taiwan, 10.III.2010, W.-T. LIU leg.

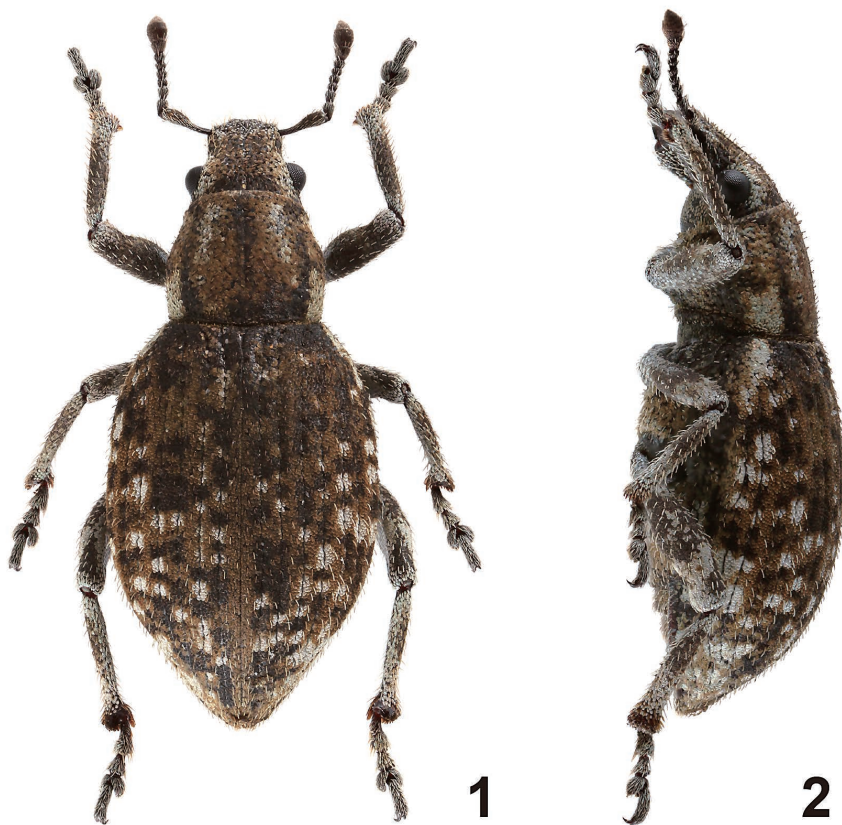
Distribution. Japan (Honshu, Shikoku, Kyushu and Nansei Islands) and Korea (NAKAMURA & MORIMOTO, 2015); Taiwan (new record).

Notes. In general appearance, *Scepticus griseus* closely resembles *S. tigrinus* (ROELOFS, 1873), which is distributed in Japan (Hokkaido, Honshu and Kyushu) and the Russian Far East (the Kuriles, Sakhalin and Primor'ye), but is distinguishable from *S. tigrinus* by the strongly convex eyes, simple fore tibiae that do not expand outwards at apex, and male aedeagus with a short flagellar sclerite (NAKAMURA & MORIMOTO, 2015).

ROELOFS (1873, p. 161) noted “Deux individus dans la collection LEWIS. J'en possède d'autres de Formosa.” in the original description of *S. tigrinus*. Judging from the known distribution range, however, *S. tigrinus* most probably does not occur in Taiwan. His note might be done based on a misidentification of *S. griseus*.

References

- KÔNO, H., 1930. Kurzüssler aus dem japanischen Reich. *Journal of the Faculty of Agriculture, Hokkaido Imperial University, Sapporo*, **24**: 153–242, 2 pls.
- MORIMOTO, K., 1962. Taxonomic revision of weevils injurious to forestry in Japan. III. Genus *Scepticus* ROELOFS. *Bulletin of the Government Forest Experimental Station, Tokyo*, (146): 9–14, 3 pls. (In Japanese, with English summary.)
- NAKAMURA, T., & K. MORIMOTO, 2015. Tribe Tanymecini. Pp. 510–556. In MORIMOTO, K., T. NAKAMURA & K. KANNÔ, *The Insects of Japan*, **4**. *Curculionidae: Entiminae (Part 2) (Coleoptera)*. 758 pp. Touka Shobo, Fukuoka.



Figs. 1–2. *Scepticus griseus* (ROELOFS) from Taiwan. — 1, Dorsal habitus; 2, lateral habitus.

ROELOFS, W., 1873. Curculionides recueillis au Japon par M. G. LEWIS. Première partie. *Annales de la Société entomologique de Belgique*, **16**: 154–193, pls. II, III.

SAWADA, Y., 2008. [Weevils of the genera *Scepticus* and *Meotiorhynchus* in seashores.] *Gekkan-Mushi, Tokyo*, (443): 37–42. (In Japanese.)

YAMASHITA, Y., H. KOJIMA, T. ISHIKAWA & N. KOBAYASHI, 2015. Molecular identification of two flightless weevils of the genus *Scepticus* ROELOFS (Coleoptera, Curculionidae) inhabiting seashores in Japan. *Japanese Journal of Systematic Entomology*, **21**: 199–202.

Manuscript received March 2016;
revised and accepted 15 March 2016.